

**We Want
to Buy Your
Calves!**



The Workin' Man's Angus Bull Sale

MARCH 10 - PIERCE, NE

with RETZLAFF ANGUS



Cattle for The Working Man

— THE 2018 — Performance Angus B U L L S A L E

Saturday, March 10 at 1 pm CST

HERB ANGUS SALES CENTER – PIERCE, NE

Bull development and sales facility is located 10 miles NW of Pierce, NE on Hwy 13 then ½ mi. S of Foster on 543 Ave.

SELLING OUR BEST 40 YEARLINGS & 18-month-old BULLS



www.herbangus.com

info@herbangus.com

Brian: 402.649.7449

Mark: 402.649.9061

RETZLAFF ANGUS

Matt Retzlaff - 402.640.9375



Please stop in, call, or visit our web site – We are ready to go to work for you!

HEIFER DEVELOPMENT OPTION – we will feed and breed your heifers to AI and HERB bulls and then deliver them to your pasture this spring. Ask for details. Discounted semen available. We'll even sell them or their calves for you!

FREE TRUCKING within 200 miles of Pierce and efficient delivery available nationwide.

CALF BUY BACKS we want to bid on your HERB-sired calves. They've got proven feedlot performance. Call us first when your loads are ready.

FREE HOUSING thru April 1 or when bull delivery begins. We will house bulls at cost after April 1. Please insure bulls left in our care.

\$50/HEAD LOAD OUT DISCOUNTS for bulls picked up and paid for sale weekend.

1st BREEDING SEASON GUARANTEES on breeding injuries or health issues.

Let's Build Success Together.



LOT 1 HERB INSIGHT E263

ANGUS BULL 18925910

DOB: 2/15/17

SAV BRILLIANCE 8077

PVF INSIGHT 0129

PVF MISSIE 790

PLAINVIEW LUTTON E102

HERB MISS LUT 0263

WAR VRD 2163 8015

CED +8.0 | BW +1.9 | WW +49.0 | YW +85.0 | M +19.0

Act. BW 79 | Adj. WW 732

Current Weight: SC:

A production and improvement powerhouse, this Insight son brings some great options to the table for profit, advancement, and enjoyment. He is one of the most physically-complete bulls we have ever raised and we have extreme confidence in his ability to make cattle better while creating a great legacy of daughters to work with. His young dam is one of our most impressive females and his sire has become a go-to source of success within the breed.

This bull checks all of the boxes in a perfectly balanced way. He is a growth bull with good looks and acceptable calving ease plus he is a muscle bull that excels in structural integrity and balance; a rare find for sure. He has been enjoyed in our pastures, our pens, and our National Western display. We think there is much more enjoyment to come.

Retaining one-third semen interest and unlimited in-herd AI use

2018 National Western Success!

Thank you for all the great inquiries and comments during the show!





The Workin' Man's Angus Bull Sale

Saturday, March 10 at 1 pm CST

10 MILES WEST OF PIERCE, NE ON HWY 13

HERB Angus Marketing Manager:

PO Box 305
Perrysburg, Ohio USA 43552
877.800.9230, office
419.350.9159, sale days
craig@primetime.marketing
www.primetime.marketing



Auction Contacts:

Brian Herbolsheimer, 402/649-7449
Mark Herbolsheimer, 402/649-9061
Matt Retzlaff, 402/640-9375
Craig Reiter, 419/350-9159
Auctioneer: Ron Kreis, 740/683-3235
American Angus Association:
Drew Feller, 402/841-4215
Internet Bidding: 937/515-1194
Ring Staff: Jamie Curtis, 402/209-6107
Ring Staff: Jeff Aegerter, 402/641-4696

Sales Representatives:

Carl Scholting, 402/740-7327
Jeff Fruhling, 217/493-2673
Cam Korth, 402/360-4368
Jesse Weidner, 402/841-8507

Bid live on the internet at:

LiveAuctionsTV

Internet Bidding Hotline: 1.937.515.1194

Pre-registration and high-speed internet is required to use this absentee bidding service. Please contact the seller or auction team for further information on the cattle and be sure to listen for updates during the auction.

Guarantee: All bulls are guaranteed sound and fertile as per the terms endorsed by the American Angus Association. Please note our first breeding season guarantee.

Health: All bulls will be available for interstate shipment. Buyers with special requirements should make plans for any extra testing that may be required.

Semen Interest: Unless other arrangements have been made prior to the auction, Herbolsheimer Angus retains 25% semen revenue sharing interest in all bulls sold.

Free Order Buying Service – Satisfaction

Guaranteed: If you would like assistance with bull selection please consult with the owners or any member of the auction staff prior to the auction. We will select bulls to fit your needs and your budget and arrange to have them delivered to you.

Beef Business Bulls



LOT 2 HERB JOHNNY CASH E235

ANGUS BULL 18926687

DOB: 2/03/17

BARSTOW CASH
VIN-MAR JOHNNY CASH 3513
VIN-MAR ELOISE 0159
OCC JUNEAU 807J
COLEMAN LADY 0235
SINCLAIR LADY 5ET1 4465

CED +13.0 | BW -2.3 | WW +42.0 | YW +78.0 | M +25.0

Act. BW 83 | Adj. WW 694

Current Weight: SC:

An elite calving-ease sire from one of our best cows, this bull will make us another happy customer. He offers sure-shot calving ease with leading depth, muscle, and the powerful look of a herd builder.

LOT 3 HERB JOHNNY CASH E212

ANGUS BULL 18926686

DOB: 2/15/17

BARSTOW CASH
VIN-MAR JOHNNY CASH 3513
VIN-MAR ELOISE 0159
SAV BRILLIANCE 8077
WAR BRILLIANCE Z212 T160
WAR ALLIANCE T160 9126 6241

CED I+9.0 | BW I+0.4 | WW I+58.0 | YW I+106.0 | M I+22.0

Act. BW 75 | Adj. WW 557

Current Weight: SC:

By Johnny Cash and built the right way, this bull should be heifer safe and he looks the part. Big, long, clean, and correct.

LOT 4 RTZ JOHNNY CASH E5057

ANGUS BULL 19036031

DOB: 2/03/17

BARSTOW CASH
VIN-MAR JOHNNY CASH 3513
VIN-MAR ELOISE 0159
BUFFALOS CONCLUSIVE BN46
RTZ CONCLUSIVE C5057
SILVEIRAS ELBA 9057

CED +3.0 | BW +2.4 | WW +67.0 | YW +105.0 | M +21.0

Act. BW 80 | Adj. WW 638

Current Weight: SC:

This is another big, long, clean bull that should lead to premium results. These Johnny Cash sons have been small at birth and rapid gaining.

Elite Performance with Class



Dam of Lot 5

LOT 5 HERB/FRUHLING BANKNOTE E2217

ANGUS BULL +*18911260

DOB: 2/21/17

CONNEALY EARNAN 076E

BROOKING BANK NOTE 4040

EA ROSE 918

EXAR SPARTAN 6225

FRUHLINGS BLACKCAP 3220

FRUHLING STEEL LADY

CED -1.0 | BW +4.8 | WW +70.0 | YW +116.0 | M +14.0

Act. BW 82 | Adj. WW 818

Current Weight: SC:

A tremendous beef bull ranking #1 in our crop for early performance, this Bank Note son is backed by a deep cow family and he offers one of the most significant performance spreads in the offering. His maternal sister is one of our exciting, young donors and his dam has delivered several previous leaders, like siblings to this bull at \$11,000 and two at \$15,000 each plus another bull calf topped the 2016 Central KY Angus Sale. This bull was a favorite of our 2018 Denver display for his powerfully-complete build and his unique pedigree.

Important Sale Information:

Terms: Terms of sale are cash or good check made payable immediately after the sale and before any cattle are loaded.

Invoiced (absentee) accounts are payable in full within 10 days of the sale or are subject to a 2% finance charge on the tenth day. A fee of \$50 will be assessed to all returned checks. **Liability:** All animals and merchandise will be at the buyer's risk as soon as bid off but will be cared for by the seller(s) for a reasonable amount of time during and immediately following the sale.

Neither the owners, auctioneers, sale manager or other affiliated personnel may be held responsible for any accidents that may occur. PrimeTIME AgriMarketing NETWORK, Inc. acts only as an agent between buyer and seller and may not be held responsible for any livestock or merchandise. It is to be clearly understood that PrimeTIME AgriMarketing NETWORK, Inc. and its representatives act only as a medium between buyer and seller and may not be held liable, financially or otherwise, for any failure on the part of the same to fulfill any obligations set forth in this sale or for the truth of any warranties expressed or implied.

Neither does PrimeTIME AgriMarketing NETWORK, Inc. assume any financial obligations to collect or enforce the collection of monies between buyer and seller. This catalog has been prepared by the sale manager from information provided by the seller(s) and is assumed accurate as presented to us. However, PrimeTIME AgriMarketing NETWORK, Inc. will in no way guarantee age, pedigree, or reproductive status of the animals selling. All exceptions taken and adjustments made are between buyer and seller. **Health:** All animals will be accompanied by a health paper valid for interstate shipment. Buyers should make themselves aware of their respective state's health requirements prior to the sale. **Insurance:** Livestock insurance will be available at the clerk's desk through Great American. **Trucking:** If you require assistance in transporting your purchases, please contact the sale manager. Every effort will be made to minimize costs to the buyer. **Announcements:** Any announcements made from the sale block by the owners, auctioneer, or sale manager take precedence over any printed materials. **Sale Booklet**

Prepared by: Craig M. Reiter, Sale Manager.

Big, Stout Bulls for Heavy Service



LOT 6 HERB DOUBLE BLACK D210

ANGUS BULL 19026720

DOB: 9/01/16

PR BLACK FRIDAY 0244
PENNERS-CC DOUBLE BLACK 2257
PR 629 205-554
COLEMAN REGIS 904
COLEMAN DIXIE ERICA 2210
COLEMAN DIXIE ERICA 0257

CED I+5.0 | BW I+2.5 | WW I+56.0 | YW I+87.0 | M I+25.0

Act. BW 84 | Adj. WW 690

Current Weight: SC:

Our lone fall bull this year, this is a great option from the time-tested Dixie Erica cow family. This bull is powerful and good looking all day with exciting length of neck and serious muscle. His dam is a beautiful cow.

LOT 7 HERB 4S MAINLINE E140

ANGUS BULL 19016165

DOB: 1/21/17

WOODHILL MAINLINE
HERB MAINLINE A906
WAR FOREFRONT 2020 0015
BC MARATHON 7022
SEDGWICKS HEATHERBLOOM T936
SEDGWICKS HEATHERBLOOM 9362

CED +8.0 | BW +0.1 | WW +48.0 | YW +75.0 | M +18.0

Act. BW 74 | Adj. WW 706

Current Weight: SC:

Sired by a previous crop leader, this extra-massive bull is one of the stoutest in the crop. He has tremendous depth of flank and belly with leading muscle and total substance.

LOT 8 HERB CHISM E019

ANGUS BULL pending

DOB: 2/18/17

S ALLIANCE 3313
S CHISUM 6175
S GLORIA 464
OCC EMBLAZON 854E
VF MISS HI BLAZE 611M
NAF MISS HI SPADE 441

CED +7.0 | BW +1.4 | WW +49.0 | YW +80.0 | M +19.0

Act. BW 86 | Adj. WW 711

Current Weight: SC:

This bull wears big pants and he is one of the widest, deepest, and heaviest in the set. He is a scale masher with top shelf growth and efficiency.

Three Sons of Primo and Coleman 7101



Coleman Everelda Entense 7101 – Dam of Lots 9-11



Colburn Primo

LOT 9

HERB PRIMO E612

ANGUS BULL +19026724 DOB: 2/24/17

DAMERON FIRST CLASS

COLBURN PRIMO 5153

SILVEIRAS SARAS DREAM 1339

SAV 8180 TRAVELER 004

COLEMAN EVERELDA ENTENSE 7101

COLEMAN EVERELDA ENTENSE 422

CED I+8.0 | BW I+3.0 | WW I+42.0 | YW I+71.0 | M I+15.0

Act. BW 84 | Adj. WW 687

Current Weight: SC:

The first of three rugged and powerful flush brothers from the breed-leading Primo and our great 7101 foundation donor, these bulls are the best of a great flush. This bull is extra powerful, heavy, and good footed. His dam is one of the most impressive cows we run, even at 10 years of age.

LOT 10

HERB PRIMO E610

ANGUS BULL +18926723 DOB: 2/23/17

DAMERON FIRST CLASS

COLBURN PRIMO 5153

SILVEIRAS SARAS DREAM 1339

SAV 8180 TRAVELER 004

COLEMAN EVERELDA ENTENSE 7101

COLEMAN EVERELDA ENTENSE 422

CED I+8.0 | BW I+3.0 | WW I+42.0 | YW I+71.0 | M I+15.0

Act. BW 85 | Adj. WW 681

Current Weight: SC:

These flush brothers are outstanding! This bull is as stout and hefty as his brothers with maybe a notch cleaner profile. All three of these bulls will build great females while increasing payweights. Their dam stays fat on oxygen and she is one of the most fertile cattle we have worked.



LOT 10



LOT 11 HERB PRIMO E426

ANGUS BULL +18926736

DOB: 3/13/17

DAMERON FIRST CLASS

COLBURN PRIMO 5153

SILVEIRAS SARAS DREAM 1339

SAV 8180 TRAVELER 004

COLEMAN EVERELDA ENTENSE 7101

COLEMAN EVERELDA ENTENSE 422

CED I+8.0 | BW I+3.0 | WW I+42.0 | YW I+71.0 | M I+15.0

Act. BW 86 | Adj. WW 665

Current Weight: SC:

Maybe the stoutest calf in the crop, this bull has been a leader all along. He is good looking and real powerful in terms of foot, bone, mass, and meat. He gets his good looks and muscle honestly from this combination of elite stock.

LOT 12 HERB/4S TOUR OF DUTY E154

ANGUS BULL +18815808

DOB: 2/28/17

WERNER WAR PARTY 2417

RB TOUR OF DUTY 177

BA LADY 6807 305

CONNEALY FINAL PRODUCT

CHERRY KNOLL RICHTA 1190

RICHTA OF CONANGA 6421

CED I+7.0 | BW I+1.5 | WW I+58.0 | YW I+102.0 | M I+26.0

Act. BW 80 | Adj. WW 812

Current Weight: SC:

Big spread performance from Tour of Duty and Final Product, this is one of the longest topped, highest capacity growth bulls in the offering. He will sire fast-growing calves – he ranks among our Top 5 for weaning performance - and his feet and legs are ideal.

LOT 14 HERB/4S TEN SPEED E246

ANGUS BULL 18815705

DOB: 3/10/17

AAR TEN X 7008 SA

SAV TEN SPEED 3022

SAV MADAME PRIDE 1134

CONNEALY COMRADE 1385

IRON MTN FOREVER LADY B080

IRON MTN FOREVER LADY 1094

CED I+8.0 | BW I+0.1 | WW I+54.0 | YW I+102.0 | M I+22.0

Act. BW 77 | Adj. WW 762

Current Weight: SC:

Calving ease and big growth, this bull is by the high-selling, outcross SAV Ten Speed. Note his excellent foot shape and leg set. He is one of the wider, thicker bulls, yet he has just a 77 lb BW.

Five Sons of New Design 2169



LOT 15 HERB RENOWN E406

ANGUS BULL +19026721

DOB: 2/07/17

RITO 707 OF IDEAL 3407 7075

SAV RENOWN 3439

SAV BLACKCAP MAY 4136

BON VIEW NEW DESIGN 878

WAR NEW DESIGN 2169 878 6241

WAR RANCHER 6241 2113

CED I+2.0 | BW I+1.5 | WW I+54.0 | YW I+90.0 | M I+20.0

Act. BW 84 | Adj. WW 704

Current Weight: SC:

A deluxe workin' man's bull, this is another high-performance son of our foundation 2169 donor whose long list of sons have averaged over \$4,200 in previous crops. Three full brothers sell this year in a total of five strong sons of 2169 in this offering. This bull is especially deep, wide, and high capacity with excellent gain performance.

LOT 16 HERB RENOWN E3

ANGUS BULL pending

DOB: 2/11/17

RITO 707 OF IDEAL 3407 7075

SAV RENOWN 3439

SAV BLACKCAP MAY 4136

BON VIEW NEW DESIGN 878

WAR NEW DESIGN 2169 878 6241

WAR RANCHER 6241 2113

CED I+2.0 | BW I+1.5 | WW I+54.0 | YW I+90.0 | M I+20.0

Act. BW 79 | Adj. WW 595

Current Weight: SC:

Full brothers sell as Lots 15 and 17 and this bull is filled with predictable genetics and quality from Renown and our foundation 2169 donor. Several older brothers to the five sons of 2169 selling here have produced very well for our customers. This is another heavy, high-capacity bull with an excellent foundation.

LOT 17 HERB RENOWN E42

ANGUS BULL +19026717

DOB: 2/04/17

RITO 707 OF IDEAL 3407 7075

SAV RENOWN 3439

SAV BLACKCAP MAY 4136

BON VIEW NEW DESIGN 878

WAR NEW DESIGN 2169 878 6241

WAR RANCHER 6241 2113

CED I+2.0 | BW I+1.5 | WW I+54.0 | YW I+90.0 | M I+20.0

Act. BW 81 | Adj. WW 569

Current Weight: SC:

The flush brother to Lots 15 and 16, this Renown son is outstanding in terms of muscle, capacity, and conversion yet he still is very clean in his build. Own all of these 2169 sons and turn out some real consistency in your next crop!

LOT 18

HERB IRON MOUNTAIN E374

ANGUS BULL pending

DOB: 2/27/17

TC GRIDIRON 258
SAV IRON MOUNTAIN 8066
SAV MADAME PRIDE 3249
BON VIEW NEW DESIGN 878
WAR NEW DESIGN 2169 878 6241
WAR RANCHER 6241 2113

CED +3.0 | BW +1.8 | WW +48.0 | YW +80.0 | M +13.0

Act. BW 76 | Adj. WW 620

Current Weight: SC:

More predictable quality and performance from our foundation 2169 donor. Previous brothers to this bull have averaged over \$4,200 and a total of five sell in this offering — our last from his donor dam.

LOT 19

HERB ROCKY E410

ANGUS BULL +19026722

DOB: 3/05/17

HARB ONWARD 786 JH
VAR ROCKY 80029
VERMILION LASS 0029
BON VIEW NEW DESIGN 878
WAR NEW DESIGN 2169 878 6241
WAR RANCHER 6241 2113

CED I-1.0 | BW I+2.5 | WW I+51.0 | YW I+86.0 | M I+26.0

Act. BW 67 | Adj. WW 550

Current Weight: SC:

The youngest of these 2169 sons, this bull arrived with just a 67 pound BW. He has the clean, correct, big ribbed design we always get from his donor dam.

Thank you for considering Herbolsheimer Angus as your bull supplier.

These bulls have been developed on a consistent and balanced ration. They were weaned on a starter pellet called Stress Care 5 that was fed along with grass hay. The bulls then transitioned onto a 46 NEG diet that consisted of grass hay, alfalfa hay, corn silage, distillers and corn. The idea was to allow the bulls to continue to grow and express their genetic potential without being pushed. Brian's hope is that these bulls last a long time for you. After a few weeks on the 46 NEG they moved to a 48 NEG using the same ingredients. They have spent the winter on either a 48 or 50 NEG ration using those same ingredients.

The bulls have been on a Purina Availa 4 tub since weaning. Availa 4 is a chelated trace mineral package in the tub that contains zinc, copper, cobalt and manganese in this form. There has been mineral in front of these bulls since the day they hit the ground. The bulls have been developed in large pens that have forced them to move to feed and water.

Brian expressed how important it was that these bulls reached their genetic potential without compromising longevity. We believe that the ration program that we put together did this and that these bulls will come home and breed cows for you while staying in condition.

Call if you have any other questions about the bull nutrition program.

John Magnuson
Purina Animal Nutrition
(402) 369-6350



FEED GREATNESS™

Join Us for a Great Lunch Before the Auction!

Our Best Bulls Sell Here!



LOT 20

HERB/RTZ BIG SKY E07

ANGUS BULL +*18926706 DOB: 2/10/17

CONNEALY EARNAN 076E
MUSGRAVE BIG SKY
SAV PRIMROSE 7861
CONNEALY FOREFRONT
WAR FOREFRONT 2020 0015
WAR ADVANTAGE 0015 8004

CED +11.0 | BW -1.4 | WW +36.0 | YW +60.0 | M +22.0
Act. BW 81 | Adj. WW 667
Current Weight: SC:

A calving ease leader from our 2018 National Western display, this Big Sky son is backed by one of our most successful cows. Previous siblings to this bull have averaged over \$7,500 and this bull will help the average. He is a big, clean, correct scale masher with calving ease!

ABSENTEE BIDDING:

We want you to attend sale day but if you cannot please call us for honest evaluations of the cattle and how they will fit your program. Then bid online at liveauctions.tv or have one of the sales representatives bid for you. We will arrange delivery or housing. Satisfaction is guaranteed!

LOT 21

HERB COMMANDO E9108

ANGUS BULL pending DOB: 1/27/17

EF COMPLEMENT 8088
EF COMMANDO 1366
RIVERBEND YOUNG LUCY W1470
SITZ UPWARD 307R
RF EVERELDA ENTENSE 39108
COLEMAN EVERELDA ENTENSE 9108

CED +13.0 | BW -0.1 | WW +58.0 | YW +98.0 | M +30.0
Act. BW 62 | Adj. WW 725
Current Weight: SC:



A sleep-all-night beef machine from one of our most exciting, young cows! This workin' man's bull is extra wide, extra deep, and extra correct. His Upward dam stems from one of the all-time best cow families at Coleman Angus, MT, and she is one of our very best.

No-Nonsense Performance Leaders



LOT 22 HERB FORTITUDE E55

ANGUS BULL pending

DOB: 2/05/17

GAR-EGL PROTEGE

PA FORTITUDE 2500

GG CLARA 0171

GAR NEW DESIGN 5050

DALTONS LUCY 391

DALTONS LUCY V033

CED +14.0 | BW -1.6 | WW +61.0 | YW +115.0 | M +27.0

Act. BW 78 | Adj. WW 783

Current Weight: SC:

The perfect Angus bull for the workin' man, this embryo calf offers elite growth and calving ease in a very stout package. He is the #1 spread bull in our 2017 crop plus he will likely record one of the best scrotal measurements and his disposition is A+. He will surely be one of the heaviest bulls at sale time and he is very correct and athletic. Bulls like this make our customers' jobs much easier.

LOT 23 HERB/4S INSIGHT E345

ANGUS BULL 18815723

DOB: 3/20/17

SAV BRILLIANCE 8077

PVF INSIGHT 0129

PVF MISSIE 790

CONNEALY CONSENSUS 7229

IRON MTN AMANDA B182

SAV AMANDA 2281

CED I+2.0 | BW I+2.9 | WW I+58.0 | YW I+104.0 | M I+24.0

Act. BW 60 | Adj. WW 737

Current Weight: SC:

Just 60 pounds of BW yet nearly 750 at weaning, this Insight son is another good one. His size, balance, and movement are outstanding.

LOT 24 RTZ KG SOLUTION E396

ANGUS BULL 19034040

DOB: 1/17/17

MOGCK SURE SHOT

KG SOLUTION 0018

KG RITO LADY 8724

ANSWER LEAD ON KD 920

ANSWER QUEEN KD396

LEAD ON QUEEN KD 9103

CED +7.0 | BW +1.1 | WW +55.0 | YW +100.0 | M +22.0

Act. BW 80 | Adj. WW 677

Current Weight: SC:

The right kind of cattle by KG Solution, this balanced-trait bull checks a lot of boxes for progress. He offers an impressive EPD profile while maintaining a hefty, correct, masculine build. He will be a great addition to a progressive program.



LOT 25

RTZ BISMARCK E1114

ANGUS BULL 19033997 DOB: 2/11/17

GAR GRID MAKER
SAV BISMARCK 5682
SAV ABIGALE 0451
SUMMITCREST COMPLETE 1P55
BOBO JUNE 1114
SYDGEN JUNE 7600

CED +6.0 | BW +1.7 | WW +62.0 | YW +105.0 | M +28.0
Act. BW 83 | Adj. WW 804
Current Weight: SC:

Top 5 weaning performance and best-in-class fleshing ability! Bismarck is a long-term breed leader due to the qualities of this deep, wide, easy-doing crop leader. This guy is efficient, massive, and docile with one of the biggest rib cages in the offering.

LOT 26

RTZ BISMARCK E2010

ANGUS BULL 19033995 DOB: 1/15/17

GAR GRID MAKER
SAV BISMARCK 5682
SAV ABIGALE 0451
SILVEIRAS OUT WEST 7026
SILVEIRAS DREAM GIRL 2010
SILVEIRAS DREAM GIRL 9101

CED +11.0 | BW +0.3 | WW +51.0 | YW +86.0 | M +17.0
Act. BW 75 | Adj. WW 613
Current Weight: SC:

Calving ease, length, and soundness sell with Bismarck son. Double digit CED.

LOT 27

RTZ ANGUS VALLEY E1286

ANGUS BULL 19035287 DOB: 2/13/17

SAV IRON MOUNTAIN 8066
SAV ANGUS VALLEY 1867
SAV MAY 2397
PLAINVIEW LUTTON E102
RTZ PLAINVIEW LUTTON Y1286
DOLLY OF PLATTEMERE 313

CED +6.0 | BW +0.7 | WW +43.0 | YW +77.0 | M +19.0
Act. BW 70 | Adj. WW 618
Current Weight: SC:

Calving ease with impressive mass and thickness! This bull has a calving ease pedigree and a low actual BW, he is recommended for use with heifers. However, he is still big backed, rugged, wide, and muscular. An excellent combination sire.

LOT 28

HERB BEACON E141

ANGUS BULL 19026718 DOB: 2/15/17

SAV BISMARCK 5682
SAV BEACON 0008
SAV MADAME PRIDE 8180
WAR FRONTMAN Y029 W214
HERB FRONTMAN A141 T241
WAR MAINLINE T241 4015

BW I+1.6 | WW I+49.0 | YW I+93 | M I+24.0
Act. BW 80 | Adj. WW 545
Current Weight: SC:

This is a big outlined, long bodied son of SAV Beacon with the good headed, good shouldered look of quality.

LOT 29

HERB 4S CANYON E133

ANGUS BULL 19016167 DOB: 3/23/17

CONNEALY FINAL PRODUCT
E3 GENETICS CANYON 9185
DANDY ACRES FOXY LADY 918
CONNEALY RIGHT ANSWER 746
BEAR MTN BLACKBIRD 1015
BEAR MTN BLACKBIRD 9024

CED +8.0 | BW +0.4 | WW +52.0 | YW +93.0 | M +26.0
Act. BW 79 | Adj. WW 735
Current Weight: SC:

A big, thick, workin' man with strong growth and conversion, this will be one of our heaviest bulls by sale time. Use him for extra growth and muscle.

LOT 30

HERB ABSOLUTE ADVANTAGE E162

ANGUS BULL pending DOB: 1/30/17

KCF BENNETT ABSOLUTE
RB ABSOLUTE ADVANTAGE
RB LADY PARTY 167-305
STYLES UPGRADE J59
HERB MISS UPGRADE 0162
WAR DIRECTION S062 4003P

CED +9.0 | BW +0.4 | WW +60.0 | YW +108.0 | M +32.0
Act. BW 67 | Adj. WW 702
Current Weight: SC:



A real tank with calving ease, growth, and elite maternal quality! This older bull offers a leading growth spread with a wide, deep, heavy skeleton. He is strong ranch equipment that will build a great cow herd for you – his dam has given us two previous sale bulls.

LOT 31

RTZ IN FOCUS E2766

ANGUS BULL pending DOB: 2/19/17

MYTTY IN FOCUS
HERB IN FOCUS 020Y
WAR FOREFRONT 2020 0015
MF DESTROYER 093
TRIPLE B CHELSIE 2766
TRIPLE BR CHELSIE 1189

CED +8.0 | BW +0.2 | WW +36.0 | YW +65.0 | M +26.0
Act. BW 88 | Adj. WW 654
Current Weight: SC:

From a previous crop leader, this bull is extra stout in his foot and bone work, huge middled, and his scrotal development is exceptional.

LOT 32

RTZ PRIORITY E8024

BULL DOB: 2/27/17

SILVEIRAS PRIORITY 9419
SILVEIRAS PRIORITY 4032
SILVEIRAS ELBA 9057
WULFFS EXT 6106
RTZ EXT 8024 5024

Act. BW 75 | Adj. WW 576

Current Weight: SC:

LOT 33

HERB/FRUH CLASSIFICATION E3037

ANGUS BULL 18911261 DOB: 3/03/17

FRUHLING SHADOW
FRUHLING CLASS
FRUHLINGS BLACKCAP
CONNEALY FINAL PRODUCT
CHESTNUT DAISEY BEAUTY 22
CN DAISEY BEAUTY 022

CED I+1.0 | BW I+3.5 | WW I+54.0 | YW I+94.0 | M I+25.0
Act. BW 80 | Adj. WW 784
Current Weight: SC:

This big, long-bodied bull recorded one of our heaviest weaning weights and is the product of a high-selling dam. His sire produced the \$10,000 high-selling bull of the 2017 Walter Angus Sale, NE.

LOT 34

HERB/FRUH CB APOLLO E3227

ANGUS BULL 18774151 DOB: 3/22/17

KOUPAL JUNEAU 797
KRAMERS APOLLO 317
KRAMERS EVERGREEN ERICA 1204
QLC FOUNDATION
WAF BLACKBIRD 078
WAF BLACKBIRD 508

CED I+3.0 | BW I+2.2 | WW I+55.0 | YW I+97.0 | M I+23.0
Act. BW 72 | Adj. WW 794
Current Weight: SC:

The youngest bull in the offering, this Apollo son is also one of the best. He offers leading birth-to-weaning performance and he has continued to add pounds and muscle at a rapid pace. Apollo sired the top-indexing sire group at Krebs Ranch, NE, a year ago.

Beef Business Bulls



LOT 35 HERB/4S RENOWN E125

ANGUS BULL 18815605 DOB: 2/25/17

RITO 707 OF IDEAL 3407 7075
SAV RENOWN 3439
SAV BLACKCAP MAY 4136
SAV POTENTIAL 0205
IRON MTN LADY BLANCHE 2265
ALC ROCHELLE K44R

CED I+5.0 | BW I+1.8 | WW I+55.0 | YW I+100.0 | M I+23.0
Act. BW 80 | Adj. WW 769
Current Weight: SC:

A powerful leader for growth, muscle and good looks, this Renown son is one of our best. He has an explosive shape to his top and hip plus an excellent head and neck. He will be one of our heaviest and thickest at sale time. Use him to make premium feeder calves.



LOT 36 HERB INSIGHT E204

ANGUS BULL 19026719 DOB: 2/03/17

SAV BRILLIANCE 8077
PVF INSIGHT 0129
PVF MISSIE 790
APEX WINDY 078
HERB WINDY A204 5104
WAR MIDLAND 5104 1051

CED I+2.0 | BW I+2.4 | WW I+55.0 | YW I+95.0 | M I+22.0
Act. BW 80 | Adj. WW 642
Current Weight: SC:

A combination sire by the red-hot Insight, this bull puts a lot of quality on a strong skeleton. We love his blend of depth, muscle, ideal structure, and a quality design. He will produce premiums for you.



LOT 37 HERB 4S GRANITE E101

ANGUS BULL 19016166 DOB: 2/14/17

CONNEALY CONSENSUS 7229
CONNEALY BLACK GRANITE
EURA ELGA OF CONANGA 9109
R5 MONUMENT 087
E3 GENETICS ANN 3405
DANDY ACRES ANN 340

CED +10.0 | BW +1.4 | WW +52.0 | YW +94.0 | M +20.0
Act. BW 74 | Adj. WW 589
Current Weight: SC:

A great choice for calving ease and all-around improvement, this bull is a favorite in the crop. He offers a great blend of depth, muscle, and eye appeal on a great foundation. Note the ideal feet and bone here.

LOT 38

RTZ FRONTMAN E82

BULL

DOB: 2/14/17

KESSLERS FRONTMAN R001
WAR FRONTMAN Y029 W214
WAR ADVANTAGE W214 680 S102
SUMMITCREST MANDATE Y34
RTZ MANDATE A82

Act. BW 87 | Adj. WW 677

Current Weight: SC:

This is a purebred, unregistered bull with leading growth and muscle. His structure and balance are excellent and his sire has given us several years of top progeny including many sale bulls.



LOT 38



LOT 39

LOT 39

RTZ ANGUS VALLEY E184

BULL

DOB: 2/19/15

SAV IRON MOUNTAIN 8066
SAV ANGUS VALLEY 1867
SAV MAY 2397
BAR FINAL ANSWER 9326
RTZ FINAL ANSWER B184

Act. BW 82 | Adj. WW 722

Current Weight: SC:

A deep, thick, easy keeper by Angus Valley, this bull looks like a cow maker!

LOT 40

RTZ FRONTMAN E44

BULL

DOB: 2/16/16

KESSLERS FRONTMAN R001
WAR FRONTMAN Y029 W214
WAR ADVANTAGE W214 680 S102
APEX WINDY 078
RTZ WINDY B44

Act. BW 92 | Adj. WW 624

Current Weight: SC:

Frontman sires quality, and this is another flashy, big boned, good looking bull.

LOT 41

RTZ ANGUS VALLEY E342

BULL

DOB: 2/02/17

SAV IRON MOUNTAIN 8066
SAV ANGUS VALLEY 1867
SAV MAY 2397
SAV BROADWALK 9276
RTZ BROADWALK C342

Act. BW 75 | Adj. WW 576

Current Weight: SC:

Another strong son of Angus Valley, one of our top sires two years in a row. This bull is clean patterned and good headed with no sheath and an excellent structure.

CHARLO 45C

18330586

COLEMAN CHARLO x EXT x CONNEALY ONWARD x COLEMAN DONNA 386
+14 CED / -.4 BW



Top seller of our 2017 sale – Owned with Reed/Johnson, IN and Cardinal Cattle, IL

If you have heifers to breed and cows to make, this is your bull for 2018 and beyond!

Ask us about semen sales & volume discounts – We'll even breed them for you!

WE WANT TO BUY YOUR CALVES & FEED THEM!!!

HERB ANGUS calves are in demand from our feeding partners and there are not enough to go around



BUY YOUR BULLS WITH US and then **CALL US FIRST** when your loads are ready
We feed them in our own yard and off site and we need more – Let's work together!
Also ask us about **HEIFER DEVELOPMENT** – Now Booking for Spring 2018

BULL INSURANCE

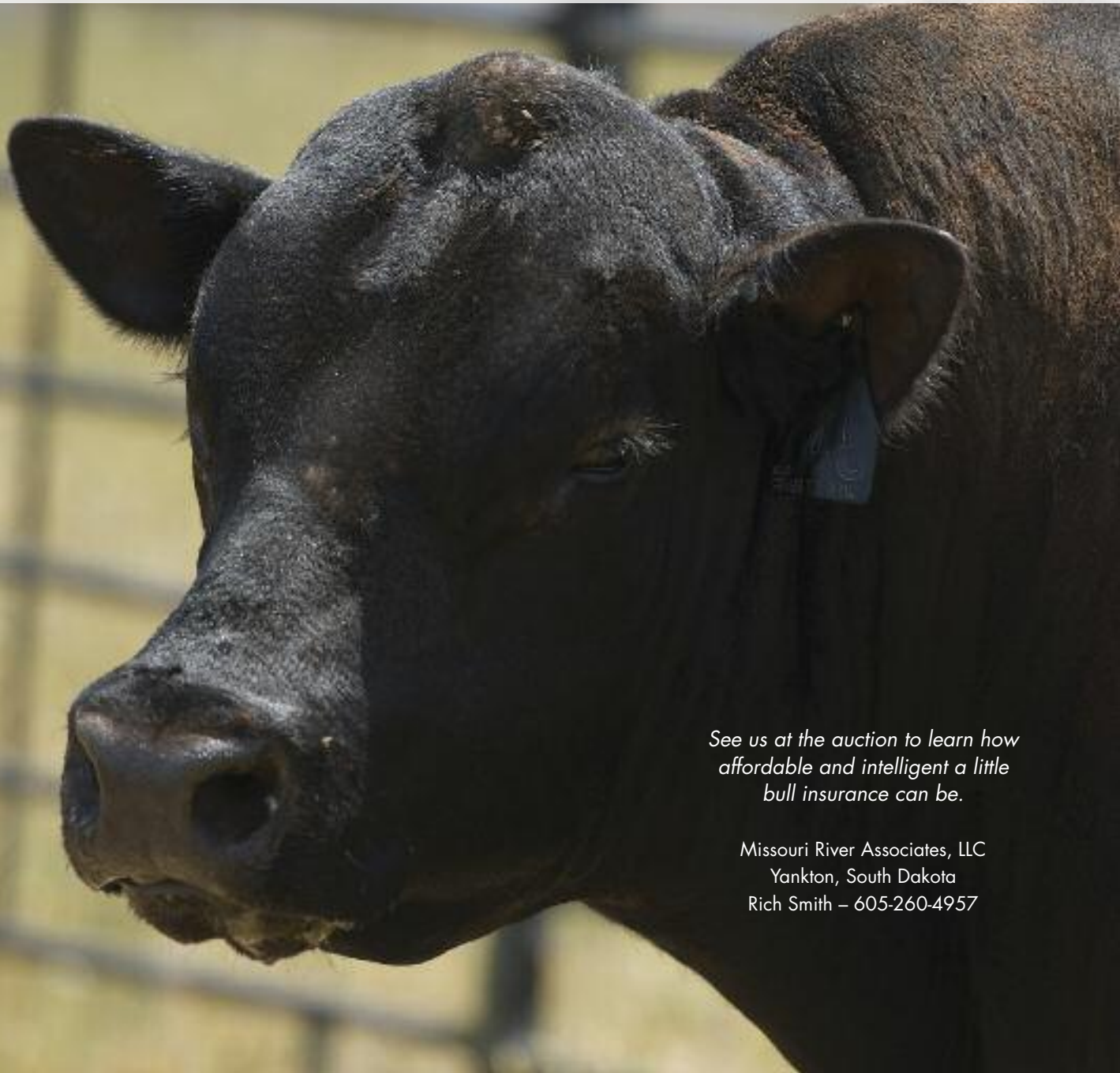
Mortality and Lose of Use Policies Available Sale day
Protect Your Investments for as Little as \$150

OPTION 1: MORTALITY & LOSS-OF-USE COVERAGE

- For bulls valued up to \$30,000
- One Year Policy for bulls aged 1 year and older
- 10% of the purchase price with a \$150 minimum
- Bulls must pass a breeding soundness examination

OPTION 2: MORTALITY COVERAGE

- For bulls valued up to \$30,000
- One Year Policy for bull 6 months-7 years of age
- 5.5% of the purchase price with a \$150 minimum
- Bulls must pass a breeding soundness examination



*See us at the auction to learn how
affordable and intelligent a little
bull insurance can be.*

Missouri River Associates, LLC
Yankton, South Dakota
Rich Smith – 605-260-4957



PO Box 305
Perrysburg, Ohio USA 43552
www.primetime.marketing



DATED MATERIAL — Do Not Delay



Saturday, March 10 - PIERCE, NE

